

WHO ARE WE?

ABOUT OUR ORGANIZATION

Rosto Solidário (RS) is a Portuguese NGOD (non-governmental organization for the development), established in 2007.

The organization is based in Santa Maria da Feira. RS work aims to foster global citizenship and solidarity by enhancing local communities' human and social development.

RS core principles are civic participation, social integration, solidarity, networking and partnership.



The organization scope of work includes four main areas: International Development Cooperation, Global Citizenship Education, Volunteering and Family Social Support. Gender Equity, Human Rights and Social Inclusion are addressed as cross-cutting issues.

Also the organization consider Non Formal Education as a vehicle for lifelong learning opportunities within the Global Citizenship Framework.

RS legal status of public utility as NGO has been recognized by Portuguese Ministry of Foreign Affairs in 2008.

As a Portuguese NGDO Platform member it is represented both in Development Education Working Group and Ethics Working Group.

RS is a credited host and sending organization for European Voluntary Service projects since 2011. Currently is working within European Solidarity Corps.



At local level, RS is a member of "Rede Social do Concelho de Santa Maria da Feira" (local network of 115 organizations with social intervention programmes). Within this network RS has been awarded four times as recognition of its work in volunteering and supporting local communities' development.

Rosto Solidário became an Eurodesk multiplier in 2016. Eurodesk is a non-profit organisation founded in 1990 and supports the Erasmus + program. Eurodesk multipliers provide young people with information and advice on mobility opportunities and encourages them to become active citizens.

THE CITY: SANTA MARIA DA FEIRA

Santa Maria da Feira is a medium sized city with about 140.000 inhabitants. It is located in Northern Portugal, in the region between the Douro and Vouga rivers, as part of *Porto* metropolitan area and *Aveiro* district. Administratively, the municipality is divided into 21 civil parishes.

Santa Maria da Feira is a heavily industrialized municipality and is famous for its several cork transforming and shoe factories. The seat of the municipality is Feira, famous for its medieval castle which was the residence of Portugal's first king, Afonso Henriques, for a short period of time. The Castle became immensely important as time went by, as the core of the Lands of Santa Maria.



Every year, in August, a medieval festival takes place in Santa Maria da Feira - the *Viagem Medieval* - during which the city goes back to the Middle Ages.

In May a street art festival – called *Imaginar-ius* – brings art to the town and welcomes artists from all over Europe.



The municipal holiday is January 20th. It's the day when the whole municipality celebrates the *Fogaceiras*. The *Fogaceiras* is a special local holiday. During the Middle Ages, the lands of *Santa Maria* (as it was known back then) were infested by the dark plague. To get rid of this calamity, the locals offered a sweet roll, called fogaça (the most typical food of Feira), to the patron Saint Sebastien. The *Fogaceiras* have been celebrated for five hundred years, since the eradication of the dark plague.



The municipality has also an important congress centre – *Europarque* – and a green park.

Learn more about the city at:
www.visitfeira.travel/index.php

HOW TO GET

Plane:

Aeroporto Francisco Sá Carneiro (Porto) is the nearest International Airport
<https://www.aeroportoporto.pt/>

Bus:

Airport – Porto City:
<https://www.getbus.eu/pt/porto-aeroporto-porto/>

Porto City – Santa Maria da Feira (TRANSDEV company)
Check timetable online at
<http://www.transdev.pt>

The house in which the volunteers will live is located close to the Rosto Solidário's office, in Rua da Relva nº 18. The house is equipped with a big kitchen, four bathrooms, five rooms (each to be shared by two people), a big living room downstairs with four sofas, television and some table and a balcony. In the house there may be participants from more than one international project.

Near the house there is a shopping centre that includes a big supermarket, Pingo Doce, and from there bus leave in direction to Porto or São João da Madeira.

CAFAP (hosting partner organization) is easily reachable in a 5-minutes walk.

Atelier It's close to the volunteers house, you reach there by bicycle or walking.

Vegetable garden It's in the Passionists farm ' you can reach there walking or by bicycle.



ESC Volunteering

The project will start in July 2021 and will last 6 months until December 2021. We have the opportunity to invite 6 volunteers from EU partner countries and program countries. People & Planet Project aims to be a transnational volunteering project to promote solidarity, community and environment sustainable development.

PROJECT GOALS:

- 1 – To promote solidarity and sustainable development through volunteering;
- 2 – To foster youth participation, especially young people with fewer opportunities;
- 3 – To strengthen european identity and solidarity through democratic participation;

- 4 – To promote social inclusion, diversity, intercultural dialogue and multilingualism;
- 5 – To produce learning outcomes in the volunteers, through new knowledge, skills and attitudes boosting their personal and professional development;
- 6 - To empower partner organisations, raising their skills, attractiveness, and international.

SUSTAINABLE DEVELOPMENT |
SOLIDARITY | VOLUNTEERING

PROJECT ACTIVITIES

Volunteers will take part in several activities in line with ESC principals and goals :

Global Citizenship Education

- * Support educational activities with babies and little children;
- * Support RS team in Global Citizenship Education activities and workshops

Upcycling/Environment preservation

- * Support and implimenting upcycling, restoration and recycling activities in RS's atelier—sharing knowledge , skills and experience involving local people in the process;
- * Planting and conservation of the solidarity vegetable garden .
- * Support forest preservation tasks and tree planting in the moutain

Social Support

- * Support and animation activities for elderly people;
- * Home support service for elderly people,;
- * Help in logistics tasks;
- * During the school period, support children at lunch time.



YOU WILL NOT BE ALONE!

Working with youth at risk of social exclusion and the elderly is not easy. During the entire project, volunteers will be able to count on the support of the project coordinator and other organisation staff, whose experience can be very helpful. In addition, we'll provide a series of training sessions that will prepare you to take on this challenge!

WHO TO CALL

Rosto Solidário: +351 256 336 001
+351 929 173 288 (mobile)

<https://www.rostosolidario.pt/pt/>

Emergency contact (Police/Fire
Department/ Ambulance): 112

Local travels: Santa Maria da Feira city is
pretty flat so is easy to walk around.

Taxis available at:
<https://www.feirataxis24h.pt/>

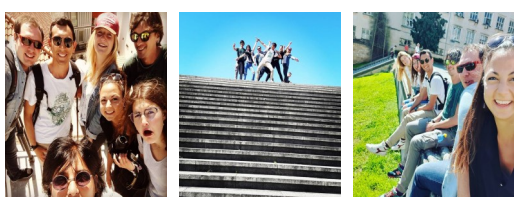
Every volunteer can also take part in complementary, cross-cutting activities, promoted by the coordinating organization, Rosto Solidário, such as:

- * Environmental volunteer work and education;
- * Support Eurodesk information activities with young people;
- * Rosto Solidário's resources centre support (clothing sorting, storage and distribution);
- * Food collection campaigns;
- * Raising awareness workshops within Education and Global Citizenship framework;
- * Engaging in local cultural events (IMAGINARIUS and VIAGEM MEDIEVAL);
- * Support artistic educational activities with disabled young people;
- * Collaboration with a local theatre company;
- * Communication and dissemination activities;

VOLUNTEERS' PROFILE

Rosto Solidário is looking for :

Reliable, proactive, dynamic, open-minded and flexible people, with problem-solving and good interpersonal communication skills.



Considering the tasks that will be assigned, the volunteer has to have good mood and willingness to accomplish them.

The respect of basic rules at the workplace and at home makes the volunteering experience both for the volunteer and for the association better and easier.

The learning factor has a particular importance: even if the volunteer never carried out the tasks that are requested, he/she can learn how to deliver them directly in the institution.

The volunteer has to consider the fact that the house is to be shared with other young people coming from different countries and different contexts.

An intermediate level of English is highly recommended. Volunteers' willingness to learn Portuguese is also a key factor in the selection process, although a previous knowledge it's not necessarily required.



Financial Support

During the project each volunteer will receive financial support under the European Solidarity Corps program.

Each participant will receive approximately 120 euros per month of pocket money and 150 euros of food allowance.

Volunteers will be also provided with a card for public transport. Each volunteer will manage their own budget.

Volunteering in Rostó Solidário!

Let's get into the details:

Volunteers will work from Monday to Friday, between 10am and 5pm. Sometimes there may be the need to work at night or weekends, but those working days will be compensated with days-off.

Every day will be different. Volunteers will participate in specially prepared trainings. There are many topics to choose from and for sure they will find something for themselves.

Volunteers will have the chance to organize events and individual projects. All this under the supervision of the project coordinator who will support the development process of volunteers.

There will also be free time. Each volunteer will have 2 days off per every work month during the project.

Travel expenses

The project covers the volunteers' travel expenses according to the program rules and limits defined in ESC guide.





Who can apply?

People in age between 18 and 30 years old from any program country or partner country.

Time frame

Duration: 6 months
(from 01.07.2021 until
31.12.2021)

Deadline for submitting your CV and motivation letter:

31.05.2021

e-mail adress:

sve@rostosolidario.pt

HOW TO APPLY STEP BY STEP

1. SUBSCRIBE TO THE ESC PORTAL;
2. READ THIS INFOKIT CAREFULLY;
3. SEND US YOUR CV AND MOTIVATION LETTER;
4. IN REPLY, WE WILL SEND YOU MORE INFORMATION ABOUT THE PROJECT AND INVITATION FOR SKYPE INTERVIEW.