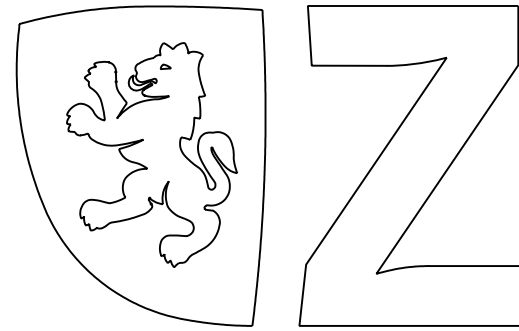
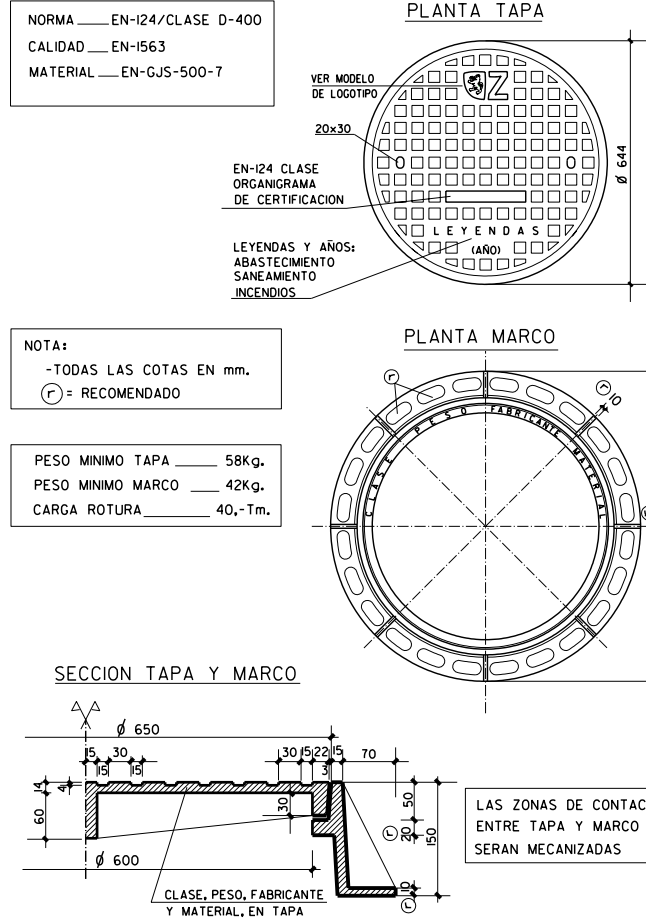


LOGOTIPO OFICIAL PARA TAPAS DE REGISTRO

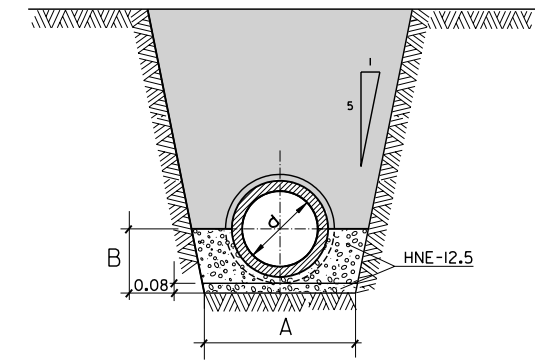


LETRA LINOTYPE AROMA SC LIGHT

MARCO Y TAPA CIRCULAR DE 60cm.



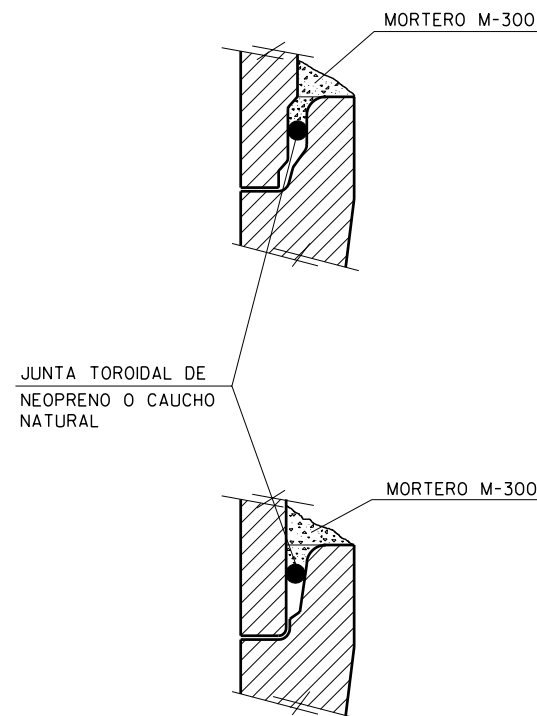
ZANJA PARA TUBERIA DE HORMIGON Ø30 - Ø60



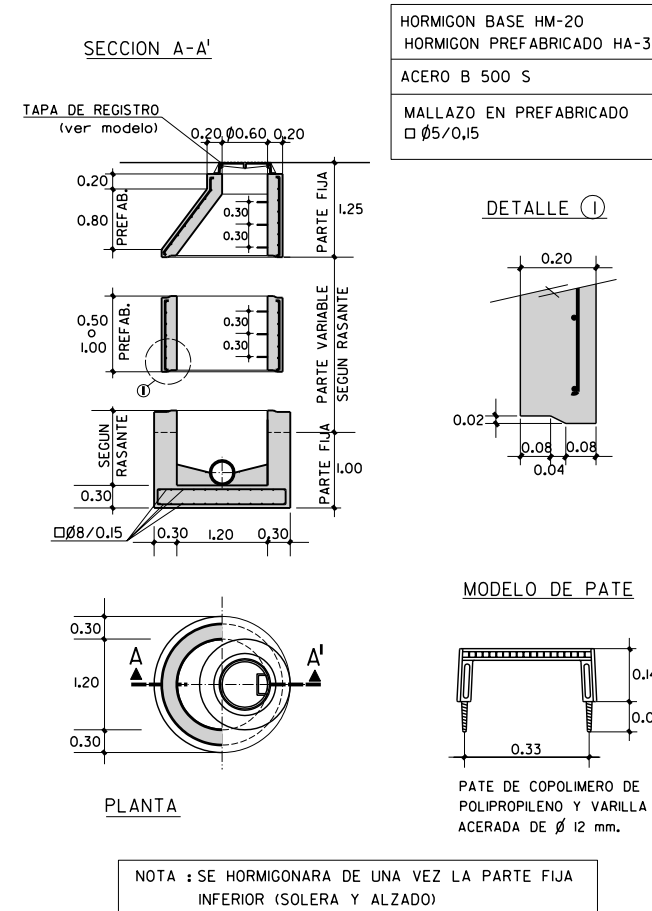
d	cm		m3 / ml. DE TUBERIA		
	A	B	VACIO TUBERIA	VOLUMEN DESPLAZADO	HORMIGON HNE-12.5
30	80	32	0.119	0.336	0.217
40	100	38	0.204	0.511	0.307
50	110	44	0.301	0.673	0.372
60	120	51	0.418	0.873	0.455

NOTA:
- LONGITUD MINIMA DE TUBO 2,40 mts.
- LA TUBERIA DE HORMIGON SE FABRICARA CON CEMENTO RESISTENTE A SULFATOS (SR).

DETALLE EJECUCION JUNTA ELASTICA



POZO DE REGISTRO PREFABRICADO PARA TUBERIA Ø ≤ 80cm.



CARTEL DE OBRA MUNICIPAL

